



JULY 1999

**1303.8**

# **BUSINESS INDICATORS**

**AUSTRALIAN  
CAPITAL  
TERRITORY**

EMBARGO: 11:30AM (CANBERRA TIME) TUES 20 JULY 1999

## **C O N T E N T S**

	<i>page</i>
Notes .....	2
Summary of findings .....	3
Selected business indicators .....	5
FEATURE ARTICLE	
Persons with a disability in the ACT .....	6
TABLES	
<b>1</b> Business expectations: Sales, September quarter 1999/ June quarter 2000, expected aggregate change .....	10
<b>2</b> Business indicators .....	11
<b>3</b> ACT in relation to the rest of Australia .....	14
<b>4</b> ACT in relation to the rest of Australia—percentage change .....	15

- For more information about these and related unpublished statistics, contact Natalie Collins on Canberra 02 6207 0446 or Will Blythe on Canberra 02 6205 0032 or any ABS office shown on the back cover of this publication.

## NOTES

### FORTHCOMING ISSUES

<i>ISSUE</i>	<i>RELEASE DATE</i>
August 1999	23 August 1999
September 1999	20 September 1999
October 1999	19 October 1999
November 1999	23 November 1999
December 1999	21 December 1999
January 2000	25 January 2000

### SYMBOLS AND OTHER USAGES

ACT	Australian Capital Territory
n.a.	not available
no.	number
n.p.	not available for publication
p	preliminary
*	Represents data with a standard error of greater than 25%. Caution should be exercised when using this data.
—	nil or rounded to zero

Dalma Jacobs  
Regional Director, Australian Capital Territory

## SUMMARY OF FINDINGS

### UPDATED SERIES

Series updated since the June 1999 issue are: labour force, job vacancies, industrial disputes, retail trade, housing finance, building approvals, motor vehicle registrations, tourist accommodation, private new capital expenditure and business expectations. The feature article on pages 6–9 is on Persons with a Disability in the ACT. In this months issue there is a new indicator on gross earnings.

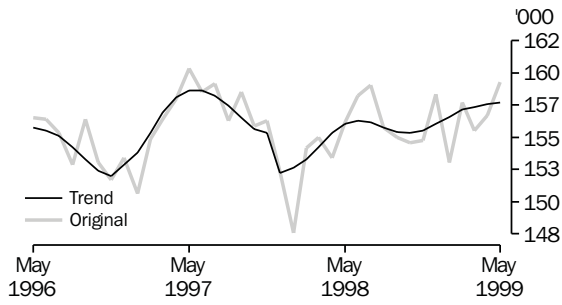
### NOTABLE MOVEMENTS

- |                     |                                                                                                                                                                                                                                                                                                                                                                                                                                                                                                                                                                                                                                                                                                                                        |
|---------------------|----------------------------------------------------------------------------------------------------------------------------------------------------------------------------------------------------------------------------------------------------------------------------------------------------------------------------------------------------------------------------------------------------------------------------------------------------------------------------------------------------------------------------------------------------------------------------------------------------------------------------------------------------------------------------------------------------------------------------------------|
| Labour force        | In June 1999, the trend unemployment rate for the ACT remained unchanged from the previous month at 6.0%, and decreased 0.9 percentage points compared to June 1998. Compared to the previous month trend employment increased by 0.2% (to 158,300 persons). Nationally, trend employment increased by 0.1% from the previous month and the trend unemployment rate decreased slightly (0.1 percentage points) to 7.3%. The trend participation rate in the ACT increased by 0.1 percentage points to 71.1% compared to the previous month, while nationally the trend participation rate remained steady at 63.0%.                                                                                                                    |
| Industrial disputes | For the 12 months ended March 1999 there were 34 working days lost per thousand employees in the ACT compared to 72 days nationally. In comparison with the 12 months ended March 1998, there was an increase of 100.0% for the ACT and a decrease of 5.3% nationally in the number of working days lost per thousand employees.                                                                                                                                                                                                                                                                                                                                                                                                       |
| Retail turnover     | The trend estimate for retail turnover in the ACT for May 1999 was \$233.5 million, an increase of 0.5% from the previous month and was up 7.0% compared to May 1998. The national trend retail turnover recorded an increase of 0.4% from the previous month and up 7.8% compared to the previous year.                                                                                                                                                                                                                                                                                                                                                                                                                               |
| Housing finance     | The trend number of dwelling units financed (including refinancing) in the ACT in May 1999 was 820, an increase of 0.9% from the previous month. The trend estimate for the value of commitments in the ACT was \$109 million, an increase of \$2 million (up 1.9%) from the previous month. Refinancing of existing dwellings comprised 17.6% of the total value of dwelling units financed in May 1999, an increase from 14.4% in the previous month. Nationally, the trend number of dwelling units financed (including refinancing) during May 1999 was 44,909, an increase of 2.4% from the previous month, while the trend estimate for the value of commitments increased to \$5,826 million (up 2.5%) from the previous month. |
| Building approvals  | The trend number of dwelling units approved in the ACT decreased by 5.8% to 161 dwelling units in May 1999. Nationally, the trend number of dwelling units approved decreased by 0.5% to 12,718 dwelling units in May 1999.                                                                                                                                                                                                                                                                                                                                                                                                                                                                                                            |

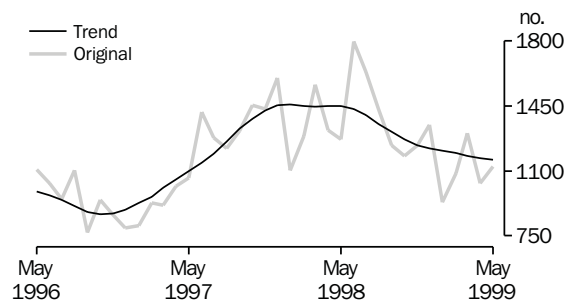
Building approvals <i>continued</i>	The value of non-residential building approvals in the ACT was \$26.1 million in May 1999, an increase of \$5.5 million (up 26.7%) from the previous month. There has been an increase of \$7.6 million (up 41.1%) compared to May 1998. Nationally, the value of non-residential building approvals increased by 17.9% from the previous month and was down 35.7% from May 1998.
Motor vehicle registration	The trend estimate for ACT new motor vehicle registrations in May 1999 was 1,158, down 0.8% from the previous month, and down 20.1% compared to May 1998. Nationally, the trend for total new motor vehicle registrations in May 1999 recorded a 0.8% decrease from the previous month, and down 4.1% compared to May 1998.
Job vacancies	There were 2,200 job vacancies in the ACT for the May quarter 1999 recording a 4.3% decrease from the previous quarter, but increased 57.1% from the corresponding quarter of the previous year. Nationally, job vacancies for May 1999 grew 6.8% since the February quarter, but decreased 3.0% on the previous year.
Tourist accommodation	<p>The room occupancy rate for ACT hotels, motels and guest houses in the March quarter 1999 was 57.6%, down 7.2 percentage points on March quarter 1998. Nationally the room occupancy rate decreased 2.2% from the previous quarter, but increased 0.2% from the corresponding quarter of the previous year.</p> <p>Takings from accommodation were \$23.7 million for the March quarter 1999 in the ACT, down 2.5% from the corresponding quarter of the previous year. Nationally, takings from accommodation increased 5.0% from the previous year to \$1,003.1 million.</p>
Private new capital expenditure	The trend private new capital expenditure in the ACT in the March quarter 1999 was \$98 million, a slight increase of 2.1% on the previous quarter and up 88.5% compared to the March quarter 1998. Private new capital expenditure on buildings increased 27.3%, while equipment increased 114.3% since the March quarter 1998. Nationally, the trend private new capital expenditure was down 0.7% from the previous quarter and down 1.9% since the March quarter 1998.
Business expectations	Business expectations in the ACT indicate a 1.4% increase in expected income from the sales of goods and services in the short term for the September quarter 1999. Nationally, there is an expected short term increase of 1.8% in the September quarter 1999. In the medium term (June quarter 1999 to June quarter 2000), growth of 5.7% in sales is expected for the ACT, which is a well above the national expectation of 3.3%.
Gross earnings	Gross earnings in the ACT for the public sector for the December quarter were \$786.5 million, a decrease of 14.1% on the previous figure and down 13.0% compared to the corresponding quarter 1997. From the previous quarter private sector gross earnings were up 10.7% to \$586.9 million, and up 29.6% from December quarter 1997. Nationally, public sector earnings were down 1.6% from the previous quarter, while private sector gross earnings grew 3.4%.

# SELECTED BUSINESS INDICATORS

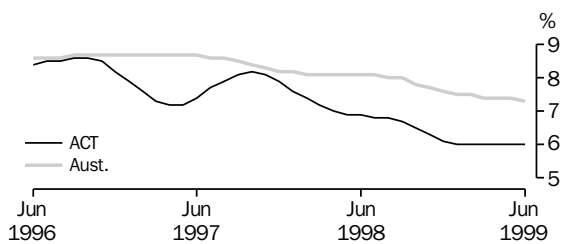
LABOUR FORCE, Employment



NEW MOTOR VEHICLE REGISTRATIONS

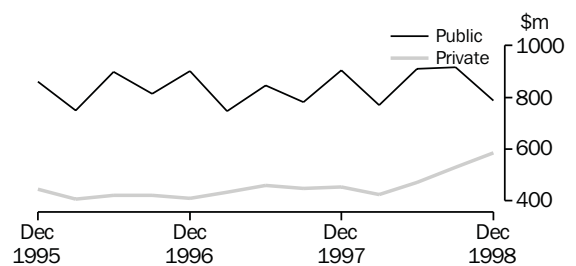


LABOUR FORCE, Unemployment Rate: Trend



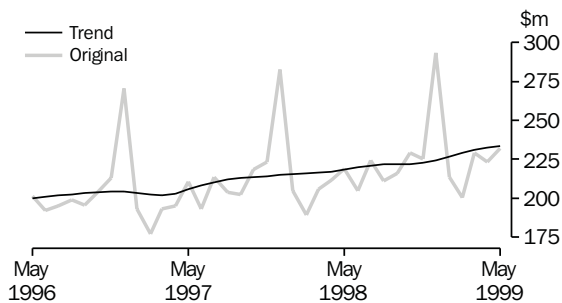
Note: Trend estimates for October 1998 to March 1999 have been revised.

GROSS EARNINGS, By Sector: Original

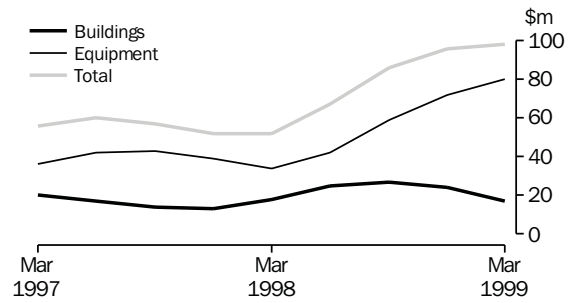


Source: Wage and Salary Earners, Australia (Cat. no. 6248.0).

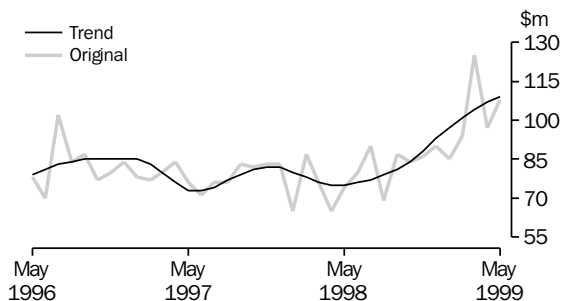
RETAIL TURNOVER



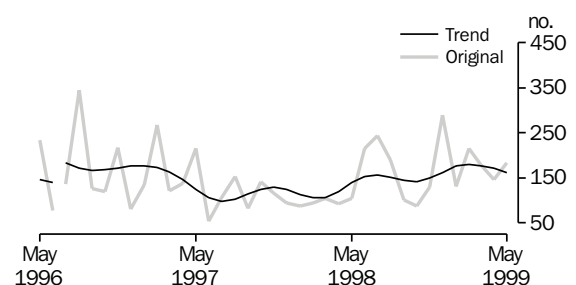
PRIVATE NEW CAPITAL EXPENDITURE: Trend



HOUSING FINANCE



BUILDING APPROVAL, Dwelling Units Approved



Note: For the period July to December 1996, 165 dwelling units and total building work of \$40.5 million (16%) had been incorrectly omitted from data reported to ABS. All series for the ACT have been revised from July 1996 and a trend break has been included in the graph.

## FEATURE ARTICLE

## PERSONS WITH A DISABILITY IN THE ACT

### SUMMARY

In 1998, 53,100 people in the ACT had a disability (17% of the total ACT population), while nationally 19% of the population had a disability. In the ACT a further 53,000 had an impairment or long-term condition that did not restrict their everyday activities. Of those people with a disability, 83% (43,800) experienced specific restrictions in core activities, schooling or employment.

People who are older are more likely to have a disability, as disability rates increase substantially with age.

Disability Disability in the context of health experience, the World Health Organisation (WHO) defines disability as any restriction or lack (resulting from an impairment) of ability to perform an action in the manner or within range considered normal for a human being.

The types of disabilities suffered by people included; core activity restrictions, where a person is restricted in communication, mobility and self-care; specific restrictions, where a person is restricted in core activities, schooling, or employment (formally referred to as a 'handicap'); and without specific restrictions.

Self care, mobility and communication are fundamentally important activities underlying all aspects of everyday life. Most people with a disability (72%, or 12% of the ACT total population) were restricted in one or more of these core activities, while nationally 78%, or 15% of the total population were restricted in core activities.

Participation in education and the labour force contributes to personal development and independence. Of those with a core activity restriction, 51% (19,600) of people were also restricted in schooling or employment. A further 5,700 people without a core activity restriction were restricted in schooling or employment. Nationally, 47% of people with a core activity restriction were restricted in schooling or employment, while there were a further 327,900 people without a core activity restriction that were restricted in schooling or employment.

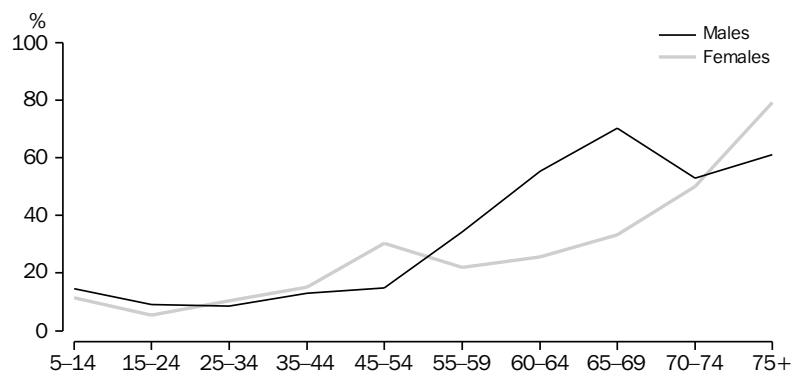
DISABILITY AND LONG-TERM HEALTH CONDITIONS—1998

	ACT		Aust.	
	Persons	Proportion	Persons	Proportion
	'000	%	'000	%
Disability				
With core activity restriction	38.1	12.3	2 828.0	15.2
With schooling or employment restrictions				
With core activity and schooling or employment restrictions	19.6	6.3	1 332.5	7.1
With schooling or employment restrictions only	5.7	1.8	327.9	1.8
Total	25.3	8.2	1 660.4	8.9
All with specific restrictions	43.8	14.2	3 155.9	16.9
Without specific restrictions	9.2	3.0	454.4	2.4
All with disability	53.1	17.2	3 610.3	19.3
No disability				
With impairment or long-term condition	53.0	17.1	3 103.2	16.6
Without impairment or long-term condition	203.1	65.7	11 947.1	64.0
All with no disability	256.1	82.9	15 050.3	80.7

Source: *Disability, Aging and Carers, Australia: Summary of Findings, 1998* (Cat. no. 4430.0); ABS, *Disability, Aging and Carers, Summary Tables, ACT, 1998* (Cat. no. 4430.8.40.001).

**Sex and age** In the ACT the rate of disability increased with age, from 7% for people aged 15 to 24 to 72% for those aged 75 and over. A similar trend was recorded nationally. The proportion of males and females with a disability varied slightly (17% and 18% respectively), however there was more variation across age groups. Males had similar or higher rates across all age groups except for those aged 45 to 54 and 75 and over. In particular, disability rates for males were markedly higher for those approaching older age (60 to 69 years).

DISABILITY RATES, By Age and Sex—ACT—1998



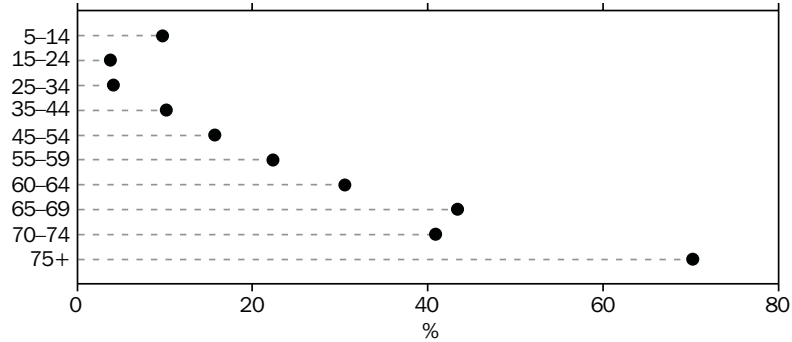
Source: *Disability, Aging and Carers, Summary Tables, ACT, 1998* (Cat. no. 4430.8.40.001).

When the disability population is confined to people with a specific restriction, females once again recorded a higher rate than males (15% compared to 14% respectively). Differences between males and females are less marked across most age groups.

Sex and age *continued*

Of the 38,100 people with a core activity restriction, 55% were female. In the 45 to 54 and the 75 and over age groups, the rates of core activity restrictions were markedly greater for females. There is also a dramatic increase in the rates of core activity restriction from 10% for the age group 5 to 14 to 70% for people aged 75 and over. The graph below shows that as people age, they are more likely to have a core activity restriction.

CORE ACTIVITY RESTRICTION RATE, ACT—1998



Note: No data was available for people aged under five years.

Source: *Disability, Aging and Carers: Summary Tables, ACT, 1998* (Cat. no. 4430.8.40.001).

Underlying health conditions

Disability usually exists as a consequence of disease, disorder or injury. In 1998, physical conditions were the most common cause of disability (86% for the ACT and 85% nationally). However, 14% of people with a disability in the ACT, and 15% of people with a disability nationally identified a mental or behavioural disorder as their main condition.

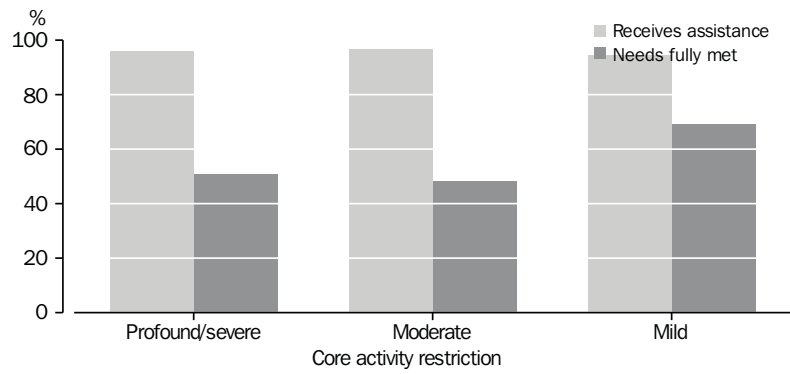
Assistance

In 1998 in the ACT, 57% of the 51,700 people with a disability living in households needed assistance to move around or go out, shower or dress, prepare meals, do housework, light property maintenance or paperwork, or communicate.

Most people in need of assistance received some help; a lower proportion of people in the ACT (55%) compared to nationally (64%) had their need fully met, while 41% in the ACT and 32% nationally had their need partly met. However there were 5% in the ACT and 4% nationally who felt their needs were not met at all. The proportion of people receiving help varied with the severity of the restriction. People with profound or severe core activity restriction who needed assistance were very likely to receive help; however they were less likely to have their needs fully met than those with milder restrictions.



PERSONS WITH A DISABILITY WHO NEED ASSISTANCE, ACT—1998



Source: *Disability, Aging and Carers, Summary Tables, ACT, 1998* (Cat. no. 4430.8.40.001).

For further information on this survey, please refer to *Disability, Aging and Carers, Summary Tables, ACT, 1998* (Cat. no. 4430.8.40.001) and *Disability, Aging, and Carers: Summary of Findings, Australia, 1998* (Cat. no. 4430.0).

# 1

## BUSINESS EXPECTATIONS: SALES

	<i>ACT</i>	<i>Aust.</i>
<i>Period</i>	%	%
<b>Short-term</b>		
Dec qtr 1997–Mar qtr 1998	-1.1	-0.3
Mar qtr 1998–Jun qtr 1998	-0.1	1.7
Jun qtr 1998–Sep qtr 1998	2.7	1.1
Sep qtr 1998–Dec qtr 1998	3.5	1.5
Dec qtr 1998–Mar qtr 1999	-2.7	-0.9
Mar qtr 1999–Jun qtr 1999	0.4	1.8
Jun qtr 1999–Sep qtr 1999	1.4	1.8
<b>Medium-term</b>		
Dec qtr 1997–Dec qtr 1998	2.9	3.0
Mar qtr 1998–Mar qtr 1999	2.6	2.6
Jun qtr 1998–Jun qtr 1999	6.9	2.7
Sep qtr 1998–Sep qtr 1999	7.5	2.8
Dec qtr 1998–Dec qtr 1999	2.6	2.7
Mar qtr 1999–Mar qtr 2000	1.7	2.3
Jun qtr 1999–Jun qtr 2000	5.7	3.3

Indicator	Unit	ACT			Aust.		
		% change from			% change from		
		Latest figure	Previous period	Same period previous year	Latest figure	Previous period	Same period previous year
<b>POPULATION, VITAL AND LABOUR</b>							
POPULATION, Dec qtr 98	'000	308.7	—	0.4	18 871.8	0.3	1.3
Natural increase	no.	752	2.3	-20.9	31 389	15.2	-1.5
Net migration	no.	-704	-44.6	54.5	27 429	-21.1	158.3
Total increase	no.	48	-80.6	150.0	58 818	-5.1	38.5
<b>LABOUR FORCE, Jun 99</b>							
Original Series							
Employed	'000	160.4	0.9	1.5	8 793.6	0.9	2.1
Unemployed	'000	8.3	-18.6	-16.2	648.5	-5.9	-11.6
Unemployment rate	%	4.9	-1.1	-1.0	6.9	-0.4	-1.0
Participation rate	%	71.2	-0.3	-0.5	63.0	0.1	-0.3
Long-term unemployed, May 99	no.	2 954	-7.2	-1.4	212 287	1.2	-8.3
Long-term unemployed as percentage of total unemployed		28.9	-3.5	2.5	30.8	1.1	-0.5
Trend series							
Employed	'000	158.3	0.2	1.3	8 742.3	0.1	1.8
Unemployed	'000	10.0	—	-13.0	692.1	-0.2	-8.6
Unemployment rate	%	6.0	—	-0.9	7.4	-0.1	-0.8
Participation rate	%	71.1	0.1	-0.5	63.0	—	-0.3
<b>WAGE AND SALARY EARNERS, Dec qtr 98</b>							
Number employed(trend)							
Public sector	'000	67.0	-1.2	-4.3	1 442.3	-1.0	-1.8
Private sector	'000	73.8	2.5	8.7	5 654.2	1.5	5.7
Total	'000	140.8	0.7	2.1	7 096.4	1.0	4.1
Gross earnings (original)							
Public sector	\$m	786.5	-14.1	-13.0	15 046.0	-1.6	-1.1
Private sector	\$m	586.9	10.7	29.6	46 897.6	5.1	10.8
Total	\$m	1 373.5	-5.0	1.2	61 943.6	3.4	7.7
<b>JOB VACANCIES, May qtr 99</b>							
INDUSTRIAL DISPUTES IN PROGRESS, Mar 99	'000	2.2	-4.3	57.1	71.1	6.8	-3.0
Working days lost	'000	0.2	—	—	45.5	-4.6	-9.4
Days lost per '000 employees (year ended Feb 99)	no.	34.0	3.0	100.0	72.0	-1.4	-5.3
<b>BUILDING AND CONSTRUCTION</b>							
<b>HOUSING FINANCE, May 99</b>							
Secured commitments to individuals for							
Original Series							
Construction of dwellings	\$m	12.0	50.0	140.0	877.0	5.9	22.8
Purchase of new dwellings	\$m	2.0	-33.3	-33.3	235.0	5.4	4.0
Purchase of established dwellings	\$m	75.0	7.1	50.0	4 866.0	8.5	32.4
Re-financing	\$m	16.0	14.3	23.1	878.0	5.3	13.7
Total housing commitments	\$m	108.0	11.3	45.9	5 978.0	8.0	29.6
Seasonally adjusted series							
Total housing commitments	\$m	112.0	15.5	45.5	5 968.0	4.2	29.6
Trend series							
Dwelling units financed	no.	820	0.9	23.9	44 909	2.4	11.2
Total housing commitments	\$m	109.0	1.9	45.3	5 826.0	2.5	26.5
<b>BUILDING APPROVALS, May 99</b>							
Original series							
Dwelling units	no.	183	24.5	74.3	13 633	10.3	-1.7
Value of new residential	\$m	25.0	40.4	85.2	1 584.4	13.4	4.6
Value of residential alterations and additions	\$m	7.1	97.2	61.4	250.4	11.3	-14.3
Value of non-residential	\$m	26.1	26.7	41.1	953.5	17.9	-35.7
Value of total building	\$m	58.2	38.6	59.9	2 788.3	14.7	-15.2
Trend series							
Dwelling units	no.	161	-5.8	15.0	12 718	-0.5	-4.8

Indicator	Unit	ACT			Aust.		
		% change from			% change from		
		Latest figure	Previous period	Same period previous year	Latest figure	Previous period	Same period previous year
<b>BUILDING AND CONSTRUCTION</b> <i>continued</i>							
BUILDING COMMENCEMENTS, Dec qtr 98							
New houses	no.	273	-35.6	5.0	25 211	-7.7	-1.2
Value of houses commenced	\$m	35.0	-30.4	17.1	3 015.8	-5.5	3.4
Value of non-residential building commenced	\$m	32.6	-39.3	-81.3	3 185.1	2.1	-21.4
Value of total commencements	\$m	99.9	-21.9	-58.9	8 054.4	-4.9	-7.8
PRICE INDEXES							
Established house price index, Mar qtr 99		128.6	0.6	1.2	131.3	1.8	5.7
<b>ENGINEERING CONSTRUCTION</b> (Dec qtr 98)							
Private sector							
Value of work commenced	\$m	17.7	86.3	17.2	2 882.1	23.0	4.8
Value of work done	\$m	15.1	39.8	-20.1	2 966.2	-0.9	8.9
Value of work yet to be done	\$m	15.3	10.9	121.7	5 903.6	-1.5	-9.5
Value of work done by public sector	\$m	21.3	2.9	17.0	1 683.8	24.7	18.2
<b>PRICES, WAGES AND CONSUMER SPENDING</b>							
CONSUMER PRICE INDEX, Mar qtr 99							
Food(a)		129.0	-0.1	3.0	127.5	1.2	4.4
Housing(a)		94.3	0.4	1.1	96.2	0.7	3.0
Transportation(a)		126.5	-0.3	-1.9	121.2	-0.6	-1.4
All groups(a)		121.4	-0.2	0.7	121.8	-0.1	1.2
AVERAGE WEEKLY EARNINGS, Feb 99							
Original series							
Males	\$	807.5	-1.5	-1.9	727.0	0.6	1.6
Females	\$	589.9	-3.7	-3.5	480.5	0.9	2.2
Persons	\$	700.6	-2.8	-2.6	608.4	0.8	1.8
Trend series							
Males	\$	806.7	-1.8	-1.0	724.4	0.2	1.6
Females	\$	595.7	-1.7	-0.8	478.8	0.5	2.4
Persons	\$	704.1	-1.8	-0.8	606.0	0.2	1.8
WAGE COST INDEX, Mar qtr 99							
Public sector(b)		104.4	0.9	3.5	105.9	1.5	4.1
Private sector(b)		103.7	0.9	2.4	104.5	0.7	2.8
Total(b)		104.1	0.8	3.0	104.8	0.9	3.0
<b>RETAIL TURNOVER, May 99</b>							
Original series							
Food retailing	\$m	83.4	7.1	2.3	4 750.2	-0.4	3.4
Department stores	\$m	23.6	-0.8	-3.7	1 011.5	6.1	4.2
Hospitality and services	\$m	38.0	-2.3	2.7	2 141.5	0.3	12.4
All other retailing	\$m	87.0	4.9	14.6	3 969.1	2.6	6.2
Total	\$m	232.0	3.8	6.0	11 872.3	1.2	5.9
Trend series							
Food retailing	\$m	82.5	-0.4	1.2	4 888.8	0.1	5.5
Department stores	\$m	23.6	-2.1	-2.1	1 027.7	-0.9	2.7
Hospitality and services	\$m	37.7	0.3	6.5	2 206.3	1.3	15.2
All other retailing	\$m	89.7	2.0	16.0	4 148.2	0.7	8.1
Total	\$m	233.5	0.5	7.0	12 271.0	0.4	7.8

(a) Base year: 1989-90 = 100.0.

(b) Base of each index: September quarter 1997 = 100.0.

Indicator	Unit	ACT			Aust.		
		Latest figure	% change from		Latest figure	% change from	
			Previous period	Same period previous year		Previous period	Same period previous year
<b>TOURISM AND TRANSPORT</b>							
HOTELS, MOTELS AND GUEST HOUSE ACCOMMODATION, Mar qtr 99							
Original series							
Room nights	'000	241.1	-0.7	-0.7	9 585.8	-3.2	5.9
Takings at current prices	\$m	23.7	-2.9	-2.5	1 003.1	-3.8	5.0
Guest arrivals	'000	180.0	-7.7	-5.2	7 597.6	-4.7	4.1
Guest nights	'000	402.4	-4.1	-2.5	17 112.5	-2.5	6.6
Room occupancy rate	%	57.6	-2.2	-11.1	58.1	-2.2	0.2
NEW MOTOR VEHICLE REGISTRATIONS, May 99							
Motor vehicles	no.	1 121	8.5	-11.9	63 900	7.3	-1.8
Seasonally adjusted motor vehicles	no.	1 184	2.0	-8.9	63 515	-3.5	-3.0
Trend motor vehicles	no.	1 158	-0.8	-20.1	65 155	-0.8	-4.1
<b>AGGREGATE INDICATORS</b>							
STATE ACCOUNTS, Mar qtr 99(a)							
Original series (chain volume measures)(b)							
Household final consumption expenditure	\$m	1 496	-9.3	4.5	82 954	-7.5	5.3
General government final consumption expenditure	\$m	2 334	-14.5	12.7	24 537	-10.0	4.2
Private gross fixed capital formation	\$m	246	-15.2	8.8	25 409	-11.1	-6.5
Public gross fixed capital formation	\$m	100	-11.5	-20.0	5 590	-8.9	78.9
State final demand	\$m	4 175	-12.7	8.4	140 702	-8.6	4.5
Gross state product	\$m	11 943	4.3	n.a.	555 689	4.6	n.a.
STATE ACCOUNTS, Mar qtr 99(a)							
Original series (at current prices)							
Household final consumption expenditure	\$m	1 540	-9.0	6.1	85 842	-7.0	7.0
General government final consumption expenditure	\$m	2 395	-15.0	14.3	25 502	-9.8	6.2
Private gross fixed capital formation	\$m	241	-16.6	7.6	26 059	-10.8	-5.5
Public gross fixed capital formation	\$m	105	-12.5	-16.7	5 760	-9.2	83.7
State final demand	\$m	4 281	-12.9	9.9	144 251	-7.5	5.7
Gross state product	\$m	12 111	5.8	n.a.	563 517	6.1	n.a.
PRIVATE NEW CAPITAL EXPENDITURE, Mar qtr 99							
Original series (at current prices)							
Buildings and structures	\$m	14	-51.7	27.3	3097	-24.5	9.3
Equipment, plant and machinery	\$m	60	-28.6	114.3	7 425	-5.5	-0.6
Total	\$m	74	-34.5	89.7	10 522	-12.0	2.1
Trend series (at current prices)							
Buildings and structures	\$m	17	-29.2	-5.6	3 511	-5.8	4.8
Equipment, plant and machinery	\$m	80	11.1	135.3	8 068	1.7	-4.6
Total	\$m	98	2.1	88.5	11 579	-0.7	-1.9

(a) Quarterly state final demand details are released as a special data service (Product no. 5206.0.40.001).

(b) Reference year for chain volume measures is 1996-97.

Source: Australia Demographic Statistics (Cat. no. 3101.0); Australian National Accounts: State Accounts (Cat. no. 5242.0); Building Activity, Australia (Cat. no. 8752.0); Building Approvals, Australia (8731.0); Consumer Price Index (Cat. no. 6401.0); Housing Finance for Owner Occupation, Australia (Cat. no. 5609.0); House Price Indexes: Eight Capital Cities (Cat. no. 6416.0); Industrial Disputes, Australia (Cat. no. 6321.0); Job Vacancies and Overtime, Australia (Cat. no. 6354.0); Labour Force, Australia, Preliminary (Cat. no. 6202.0); Labour Force, Australia (Cat. no. 6203.0); New Motor Vehicle Registration, Australia (Cat. no. 9301.0); Price Index of Materials Used in Housing Building (Cat. no. 6408.0); Private New Capital Expenditure, State Estimates (Cat. no. 5646.0); Retail Trade, Australia (Cat. no. 8501.0); Tourism Accommodation, ACT (Cat. no. 8635.8); Tourism Indicators, Australia (Cat. no. 8634.0).

Indicator	Unit	Latest period	NSW	Vic.	Qld	SA	WA	Tas.	NT	ACT	Aust.
<b>POPULATION</b>	'000	Dec qtr 98	6 384.3	4 689.8	3 485.2	1 490.4	1 847.8	471.1	191.4	308.7	18 871.8
<b>LABOUR FORCE</b> (trend)											
Employed persons	'000	Jun 99	2 921.3	2 175.0	1 645.0	659.3	897.2	196.1	94.8	158.3	8 742.3
Unemployment rate	%	Jun 99	6.6	7.7	8.1	8.4	6.7	10.0	4.5	6.0	7.3
<b>WAGE AND SALARY EARNERS</b> (trend)											
Public sector	'000	Dec qtr 98	463.0	306.0	285.1	113.8	143.8	41.3	22.3	67.0	1 442.3
Private sector	'000	Dec qtr 98	1 994.3	1 464.7	983.7	410.3	565.7	113.6	47.9	73.8	5 654.2
Total public and private sector (trend)	'000	Dec qtr 98	2 457.4	1 770.7	1 268.9	524.2	709.6	155.0	70.2	140.8	7 096.4
<b>STATE ACCOUNTS(a)</b> (original)											
Gross state product (chain volume measures)	\$m	1997-98	196 676	141 219	90 188	38 092	60 695	11 095	5 779	11 943	555 689
Gross state product (current prices)	\$m	1997-98	199 448	143 209	91 459	38 629	61 550	11 251	5 860	12 111	563 517
<b>PRIVATE NEW CAPITAL EXPENDITURE</b> (trend)	\$m	Mar qtr 98	3 756	2 921	2 159	563	1 657	116	443	98	11 579
<b>BUILDING APPROVALS</b>											
Dwelling units approved(original)	no.	May 99	4 764	3 610	2 242	683	1 941	86	124	183	13 633
Dwelling units approved (trend)	no.	May 99	4 204	3 576	2 273	669	1 789	109	146	161	12 718
Value of non-residential building approved (original)	\$m	May 99	404.5	241.6	152.4	53.3	61.2	10.1	4.2	25.1	953.5
Value of all buildings approved (original)	\$m	May 99	1 094.2	755.4	421.3	134.2	282.7	20.0	22.4	58.2	2 788.3
<b>ENGINEERING CONSTRUCTION</b>											
Value of engineering construction work done	\$m	Dec qtr 98	1 424.2	844.9	1 134.7	245.9	814.6	55.2	94.0	36.4	4 650.0
<b>AVERAGE WEEKLY EARNINGS</b> (trend)											
Full-time adult ordinary time	\$	Feb 99	783.0	732.1	698.7	702.9	743.4	700.7	751.8	842.1	745.0
<b>RETAIL TRADE</b> (trend)											
Retail turnover	\$m	May 99	4 272.1	2 962.7	2 298.4	883.0	1 201.9	276.7	134.9	233.5	12 271.0
<b>HOTELS, MOTELS &amp; GUEST HOUSE ACCOMMODATION</b>											
Room nights occupied	'000	Mar qtr 99	3 213.2	1 680.8	2 489.4	524.8	878.9	327.8	229.8	241.1	9 585.8
Room occupancy rate	%	Mar qtr 99	60.6	62.0	54.9	58.0	55.8	66.1	42.2	57.6	58.4
<b>NEW MOTOR VEHICLE REGISTRATIONS</b> (trend)	no.	May 99	22 270	17 656	11 349	4 209	6 437	1 301	775	1 158	65 155
	Unit	Latest period	Syd.	Melb.	Bris.	Adel.	Perth	Hob.	Dar.	Canb.	Aust.
<b>CONSUMER PRICE INDEX</b>											
Food(d)		Mar qtr 99	129.1	125.8	126.4	128.0	128.4	125.5	125.6	129.0	127.5
Housing(d)		Mar qtr 99	103.8	87.3	101.6	92.2	90.6	95.8	116.0	94.3	96.2
Transportation(d)		Mar qtr 99	122.5	119.9	120.5	120.9	121.1	118.4	119.1	126.5	121.2
All Groups(d)		Mar qtr 99	122.6	121.0	122.8	122.7	119.8	122.1	122.1	121.4	121.8
Average retail prices (cents)											
Milk, carton, supermarket sales	1 litre	Mar qtr 99	122	139	119	136	141	130	130	115	n.a.
Bread, white loaf, sliced, supermarket sales	680 g	Mar qtr 99	217	212	192	161	208	203	217	210	n.a.
Beef, rump steak	1 kg	Mar qtr 99	1 180	1 059	1 066	1 193	1 091	1 001	1 190	1 142	n.a.
Chicken, frozen	1 kg	Mar qtr 99	369	357	322	365	350	378	381	361	n.a.
Potatoes	1 kg	Mar qtr 99	129	149	124	82	138	89	149	146	n.a.
Coffee, instant (jar)	150 g	Mar qtr 99	627	634	584	556	643	588	589	535	n.a.
Scotch nip, public bar	30 ml	Mar qtr 99	329	318	269	358	389	264	330	273	n.a.
Private motoring petrol											
Leaded	1 litre	Mar qtr 99	68.7	66.8	60.2	68.3	68.9	74.1	75.7	72.0	n.a.
Unleaded	1 litre	Mar qtr 99	66.4	64.6	57.9	65.9	66.7	72.1	73.7	69.7	n.a.

(a) State estimates are not comparable to national estimates from the June quarter 1995 due to revised methodology used in *Australian National Accounts, State Accounts* (Cat. no. 5242.0).

(b) Experimental series. Users are cautioned these estimates are derived indirectly by calculating a deflator from the expenditure components of the state series concerned. Therefore, in general, the sum of the state estimates does not equal the estimates for Australia.

(c) Reference year for chain volume measures is 1996-97.

Indicator	Latest period	NSW	Vic.	Qld	SA	WA	Tas.	NT	ACT	Aust.
	<b>POPULATION</b>	Dec qtr 98	0.3	0.3	0.4	0.1	0.4	-0.1	0.3	—
<b>LABOUR FORCE</b> (trend)										
Employed persons	Jun 99	0.1	0.1	0.1	0.1	0.1	0.5	-0.5	0.2	0.1
Unemployment rate	Jun 99	—	—	0.1	-0.1	-0.1	-0.2	0.2	—	-0.1
<b>WAGE AND SALARY EARNERS</b> (trend)										
Pubic sector	Dec qtr 98	-1.3	-1.0	1.3	-4.4	-2.3	1.2	—	-1.2	-1.0
Private sector	Dec qtr 98	2.5	1.4	0.2	2.1	0.1	1.0	1.1	2.5	1.5
Total public and private sector	Dec qtr 98	1.8	1.0	0.5	0.7	-0.4	1.1	0.7	0.7	1.0
<b>STATE ACCOUNTS(a)</b> (original)										
Gross state product (chain volume measures)(b)(c)	Mar qtr 99	4.6	3.8	4.9	4.6	6.5	4.0	5.1	4.3	4.6
Gross state product (current prices)	Mar qtr 99	6.0	5.3	6.4	6.1	8.0	5.5	6.5	5.8	6.1
<b>PRIVATE NEW CAPITAL EXPENDITURE</b> (trend)										
Total (at current prices)	Dec qtr 98	1.5	1.2	8.6	-6.2	-10.5	-3.3	-4.9	2.1	-0.7
<b>BUILDING APPROVALS</b>										
Dwelling units approved (original)	Apr 99	19.8	5.7	-2.1	20.2	19.4	-31.7	-41.0	24.5	10.3
Dwelling units approved (trend)	Apr 99	-0.4	0.3	-1.3	1.1	1.9	-2.7	-5.2	-5.8	-0.5
Value of non-residential building approved (original)	Apr 99	95.2	31.4	-43.5	134.8	-10.4	-62.5	-54.3	26.7	17.9
Value of all buildings approved (original)	Apr 99	40.5	18.2	-21.2	48.9	8.1	-53.7	-44.8	38.6	14.7
<b>ENGINEERING CONSTRUCTION</b>										
Value of engineering construction work done	Dec qtr 98	14.6	3.1	15.2	0.6	-7.3	3.4	7.6	15.2	7.1
<b>AVERAGE WEEKLY EARNINGS</b> (trend)										
Full-time adult ordinary time	Feb 99	1.5	—	0.2	0.5	-0.4	0.4	0.3	-0.8	0.6
<b>RETAIL TRADE</b> (trend)										
Retail turnover	May 99	0.5	0.7	0.3	-0.4	-0.1	-0.1	1.2	0.5	0.4
<b>HOTELS, MOTELS &amp; GUEST HOUSE ACCOMMODATION</b>										
Room nights occupied	Mar qtr 99	0.1	4.9	-10.9	-6.7	-3.9	15.1	-21.6	-0.7	-3.2
Room occupancy rate	Mar qtr 99	0.8	3.3	-5.7	-2.8	-1.9	9.9	-10.6	-1.3	-1.0
<b>NEW MOTOR VEHICLE REGISTRATIONS</b> (trend)	May 99	-0.6	—	-3.1	0.2	-0.4	—	1.3	-0.8	-0.8
	Latest period	Syd.	Melb.	Bris.	Adel.	Perth	Hob.	Dar.	Canb.	Aust.
<b>CONSUMER PRICE INDEX</b>										
Food(d)	Mar qtr 99	1.8	1.2	1.1	-0.2	0.6	0.4	120.6	-0.1	1.2
Housing(d)	Mar qtr 99	1.2	0.8	0.3	0.3	0.2	0.4	1.3	0.4	0.7
Transportation(d)	Mar qtr 99	-0.7	-0.6	-0.4	-0.3	-0.9	-0.2	-0.6	-0.3	-0.6
All Groups(d)	Mar qtr 99	0.2	0.2	-0.2	-0.7	-0.3	-0.5	-0.5	-0.2	-0.1
Average retail prices (cents)										
Milk, carton, supermarket sales	Mar qtr 99	5.2	3.0	-0.8	3.0	4.4	4.0	6.6	0.0	n.a.
Bread, white loaf, sliced, supermarket sales	Mar qtr 99	3.3	5.5	-3.5	-3.6	6.1	-0.5	—	0.0	n.a.
Beef, rump steak	Mar qtr 99	1.5	2.7	2.4	3.2	7.2	13.6	-3.2	-2.1	n.a.
Chicken, frozen	Mar qtr 99	0.8	3.5	-4.7	9.9	0.3	-0.5	8.5	4.3	n.a.
Potatoes	Mar qtr 99	1.6	8.8	-7.5	-4.7	2.2	15.6	21.1	-2.0	n.a.
Coffee, instant (jar)	Mar qtr 99	9.4	3.9	-2.7	-1.2	-5.3	-12.4	-2.6	-13.0	n.a.
Scotch nip, public bar	Mar qtr 99	-6.8	0.6	-0.4	-1.1	1.3	—	0.9	1.1	n.a.
Private motoring petrol										
Leaded	Mar qtr 99	-3.4	-2.2	-2.6	-1.7	-2.7	-0.9	-1.9	-2.7	n.a.
Unleaded	Mar qtr 99	-3.5	-2.3	-2.7	-1.9	-2.8	-1.0	-2.0	-2.8	n.a.

(a) State estimates are not comparable to national estimates from the June quarter 1995 due to revised methodology used in *Australian National Accounts, State Accounts* (Cat. no. 5242.0).

(b) Experimental series. Users are cautioned these estimates are derived indirectly by calculating a deflator from the expenditure components of the state series concerned. Therefore, in general, the sum of the state estimates does not equal the estimates for Australia.

(c) Reference year for chain volume measures is 1996-97.

(d) Base year: 1989-90 = 100.0.

## SELF-HELP ACCESS TO STATISTICS

- CPI INFOLINE* For current and historical Consumer Price Index data, call 1902 981 074 (call cost 75c per minute).
- DIAL-A-STATISTIC* For the latest figures for National Accounts, Balance of Payments, Labour Force, Average Weekly Earnings, Estimated Resident Population and the Consumer Price Index call 1900 986 400 (call cost 75c per minute).
- INTERNET* [www.abs.gov.au](http://www.abs.gov.au)
- LIBRARY* A range of ABS publications is available from public and tertiary libraries Australia-wide. Contact your nearest library to determine whether it has the ABS statistics you require.

## WHY NOT SUBSCRIBE?

- PHONE* +61 1300 366 323
- FAX* +61 03 9615 7848

## CONSULTANCY SERVICES

ABS offers consultancy services on a user pays basis to help you access published and unpublished data. Data that is already published and can be provided within 5 minutes is free of charge. Statistical methodological services are also available. Please contact:

<i>INQUIRIES</i>	<i>City</i>	<i>By phone</i>	<i>By fax</i>
	Canberra	02 6252 6627	02 6207 0282
	Sydney	02 9268 4611	02 9268 4668
	Melbourne	03 9615 7755	03 9615 7798
	Brisbane	07 3222 6351	07 3222 6283
	Perth	08 9360 5140	08 9360 5955
	Adelaide	08 8237 7400	08 8237 7566
	Hobart	03 6222 5800	03 6222 5995
	Darwin	08 8943 2111	08 8981 1218

*POST* Client Services, ABS, PO Box 10, Belconnen ACT 2616

*EMAIL* [client.services@abs.gov.au](mailto:client.services@abs.gov.au)



2130380007998  
ISSN 1320-808X

RRP \$15.50